

ARiS

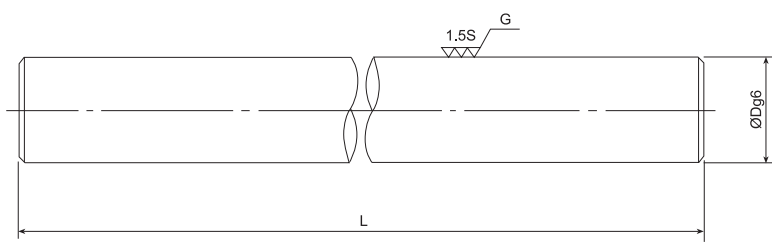
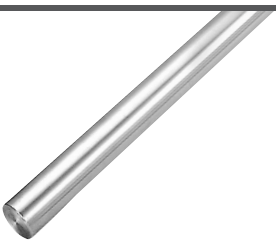
SHAFT

軸心

SF 軸心 Shaft

材 質：軸承鋼(SUJ2相當)
處理方式：高週波熱處理及研磨
硬 度：HRC 62±2

Material：SUJ2(high carbon chromium steel)
Treatment：Heat treatment ground and polished
Hardness：HRC 62±2



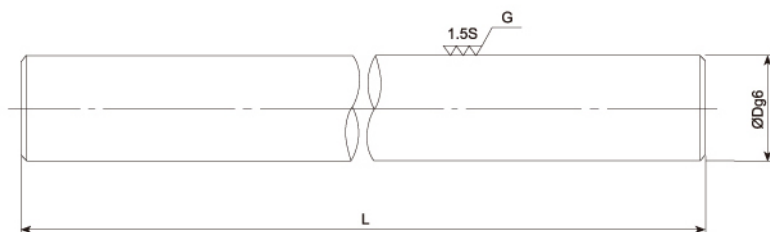
外徑 Diameter D	型號 Model No.	外徑公差 Diameter tolerance μm	最大製作長度 Max Length	有效硬化層深度 Depth of effective hardened layer	重量 Weight	外徑 Diameter D
mm	SF	g6	L mm	mm	kg/m	mm
3	SF 3	-4	400	1.5以上 1.5 and above	0.06	3
4	SF 4		400		0.10	4
5	SF 5		2000		0.16	5
6	SF 6		3000		0.23	6
8	SF 8	-5	3000		0.40	8
10	SF 10		3000		0.62	10
12	SF 12	-14	4000	2.0以上 2.0 and above	0.89	12
13	SF 13		4000		1.05	13
16	SF 16		4000	2.5以上 2.5 and above	1.58	16
20	SF 20		6000		2.47	20
25	SF 25	-7	6000	3.0以上 3.0 and above	3.85	25
30	SF 30		6000		5.55	30
35	SF 35	-9	6000	3.0以上 3.0 and above	7.55	35
40	SF 40		6000		9.87	40
50	SF 50		6000		15.41	50
60	SF 60	-10	6000		22.20	60
80	SF 80		6000		39.46	80
100	SF100	-12 -34	6000		61.66	100

SCF 不生銹軸心

Anticorrosive Shaft

材 質：軸承鋼(SUJ2相當)
 處理方式：高週波熱處理，研磨及表面鍍硬路
 硬 度：HRC 62±2

Material : SUJ2(high carbon chromium steel)
 Treatment : Heat treatment ground, chromium plated and polished
 Hardness : HRC 62±2



外徑 Diameter D	型號 Model No.	外徑公差 Diameter tolerance μm	最大製作長度 Max Length	有效硬化層深度 Depth of effective hardened layer	重量 Weight	外徑 Diameter D
mm	SCF	g6	L mm	mm	kg/m	mm
3	SCF 3	-4	400	1.5以上 1.5 and above	0.06	3
4	SCF 4		400		0.10	4
5	SCF 5		2000		0.16	5
6	SCF 6	-5	3000		0.23	6
8	SCF 8		3000		0.40	8
10	SCF 10		3000	2.0以上 2.0 and above	0.62	10
12	SCF 12	-6	4000		0.89	12
13	SCF 13		4000		1.05	13
16	SCF 16		4000		1.58	16
20	SCF 20	-7	6000		2.47	20
25	SCF 25		6000	2.5以上 2.5 and above	3.85	25
30	SCF 30		6000		5.55	30
35	SCF 35	-9	6000		7.55	35
40	SCF 40		6000	3.0以上 3.0 and above	9.87	40
50	SCF 50		6000		15.41	50
60	SCF 60	-10	6000		22.20	60
80	SCF 80		6000		39.46	80
100	SCF100		6000		61.66	100

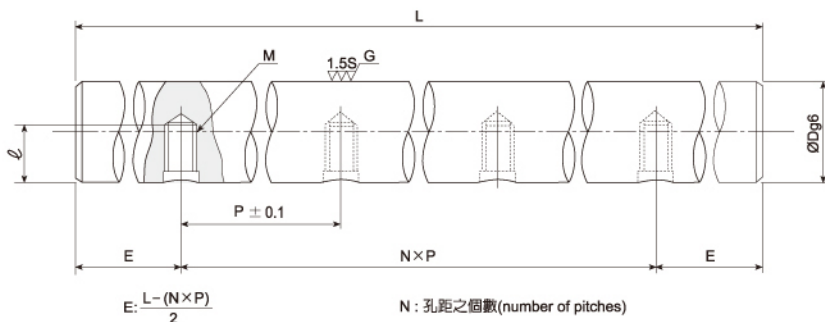
SCFB 外徑攻牙軸心(SUJ2鍍鉻,不生鏽) Tapped Shaft (Anticorrosive)

材質：軸承鋼(SUJ2相當) 高週波熱處理，
研磨及表面鍍硬鉻

Material : SUJ2(high carbon chromium steel)
Heat treatment, ground, chromium
plated and polished

硬度：HRC 62±2

Hardness : HRC 62±2



單位(unit) : mm

外徑 Diameter	型號 Type	外徑公差 μm Diameter tolerance	孔距 Pitch	螺栓 Nominal screw	螺牙深度 Thread depth	最大長度 Max length	重量 Weight
D	SCFB	g6	P	M	ℓ	L(max)	kg/m
12	SCFB12	-6 -17	100	M4x0.7	6	4,000	0.89
16	SCFB16		150	M5x0.8	8	4,000	1.58
20	SCFB20	-7 -20	150	M6x1	12	4,200	2.47
25	SCFB25		200	M6x1	15	4,200	3.85
30	SCFB30		200	M8x1.25	18	4,200	5.55
35	SCFB35	-9 -25	200	M8x1.25	20	4,200	7.55
40	SCFB40		300	M8x1.25	25	4,200	9.87

Example of identification number:

SCFB 20x1500

① ②

① Type: Shaft diameter

② Overall Length

訂購例：

SCFB 20x1500

① ②

① 型號：軸心外徑

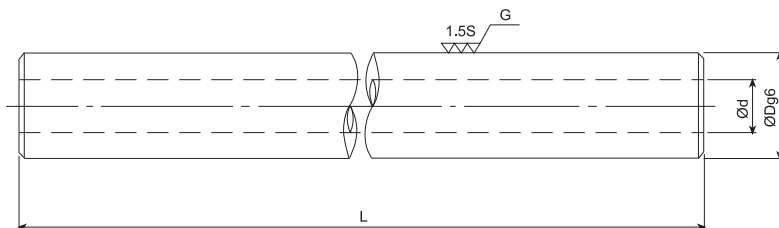
② 總長度

SCNT 空心軸心(SUJ2鍍鉻, 不生銹)

Anticorrosive Hollow Shaft

材 質：軸承鋼(SUJ2相當)
 處理方式：高週波熱處理，研磨及表面鍍硬鉻
 硬 度：HRC 62±2

Material：SUJ2(high carbon chromium steel)
 Treatment：Heat treatment ground, chromium plated and polished
 Hardness：HRC 62±2



外 徑 Outer Diameter D mm	內徑(參考) Inner Diameter(Ref) d mm	型號 Model No.	外徑公差 Diameter tolerance μm	最大製作長度 Max Length L mm	有效硬化層深度 Depth of effective hardened layer mm	重量 Weight kg/m	外 徑 Outer Diameter D mm	內徑(參考) Inner Diameter(Ref) d mm
SCNT	g6	L	mm	kg/m	mm	mm	mm	mm
10	4	SCNT 10	-5~-14	500	1.2	0.52	10	4
12	5	SCNT 12	-6~-17	500	1.3	0.73	12	5
13	6	SCNT 13	-6~-17	500	1.3	0.82	13	6
16	8	SCNT 16	-6~-17	1000	1.6	1.18	16	8
20	10	SCNT 20	-7~-20	1200	1.8	1.85	20	10
25	15	SCNT 25	-7~-20	2000	2.0	2.46	25	15
30	16	SCNT 30	-7~-20	2500	2.4	3.97	30	16
35	19	SCNT 35	-9~-25	2500	2.5	5.32	35	19
40	20	SCNT 40	-9~-25	3000	2.6	7.39	40	20
50	26	SCNT 50	-9~-25	3000	2.9	11.3	50	26
60	32	SCNT 60	-10~-29	3000	3.0	15.9	60	32

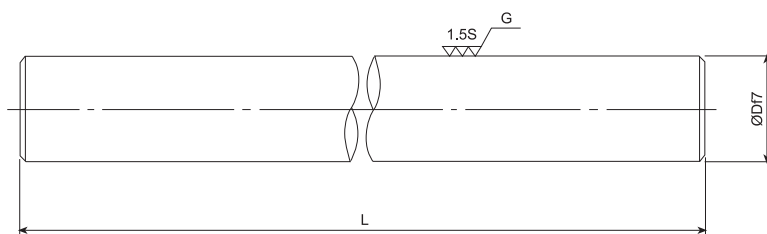
CRS 不生銹軸心(S45C鍍鉻) Anticorrosive

材 質：中碳鋼(S45C)

處理方式：表面鍍硬鉻

Material：S45C

Treatment：Ground, chromium plated and polished



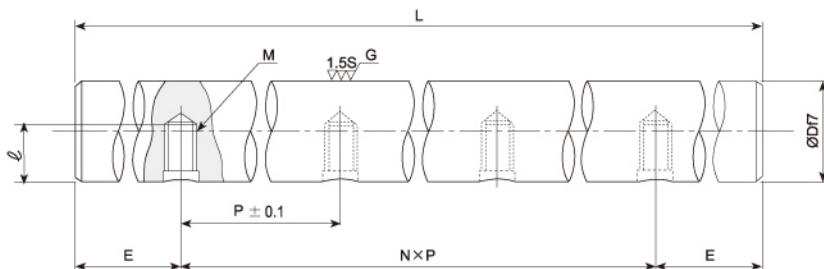
外徑 Diameter D mm	型號 Model No.	外徑公差 Diameter tolerance μm	最大製作長度 Max. Length L mm	重量 Weight kg/m	外徑 Diameter D mm
8	CRS 8	-13	3000	0.40	8
10	CRS 10	-28	3000	0.62	10
12	CRS 12	-16	3000	0.89	12
15	CRS 15	-34	3000	1.39	15
16	CRS 16	-20	3000	1.58	16
18	CRS 18	-41	3000	2.00	18
20	CRS 20	-25	4000	2.47	20
25	CRS 25	-50	4000	3.85	25
30	CRS 30	-30	4000	5.55	30
35	CRS 35	-60	4000	7.55	35
40	CRS 40	-36	4000	9.87	40
45	CRS 45	-71	4000	12.49	45
50	CRS 50	-36	4000	15.41	50
55	CRS 55	-71	4000	18.65	55
60	CRS 60	-36	4000	22.20	60
65	CRS 65	-71	4000	26.05	65
70	CRS 70	-36	4000	30.21	70
75	CRS 75	-71	4000	34.68	75
80	CRS 80	-36	4000	39.46	80
90	CRS 90	-71	4000	49.94	90
100	CRS 100	-36	4000	61.66	100
120	CRS 120	-71	4000	88.78	120

CRSB 外徑攻牙軸心(S45C鍍鉻,不生銹)

Tapped Shaft (Anticorrosive)

材 質：中碳鋼(S45C)
 處理方式：表面鍍硬鉻

Material: S45C
 Treatment: Ground, Chromium plated and polished



單位(unit) : mm

外徑 Diameter	型號 Type	外徑公差 μm Diameter tolerance	孔距 Pitch	螺紋 Nominal screw	螺牙深度 Thread depth	最大長度 Max length	重量 Weight
D	CRSB	f7	P	M	ℓ	L(max)	kg/m
12	CRSB12	-16	100	M4x0.7	6	4,000	0.89
16	CRSB16	-34	150	M5x0.8	8	4,000	1.58
20	CRSB20	-20	150	M6x1	12	4,200	2.47
25	CRSB25	-41	200	M6x1	15	4,200	3.85
30	CRSB30	-25	200	M8x1.25	18	4,200	5.55
35	CRSB35	-50	200	M8x1.25	20	4,200	7.55
40	CRSB40	-50	300	M8x1.25	25	4,200	9.87

Example of identification number:

CRSB 20x1500

① ②

① Type: Shaft diameter

② Overall Length

訂購例：

CRSB 20x1500

① ②

① 型號：軸心外徑

② 總長度

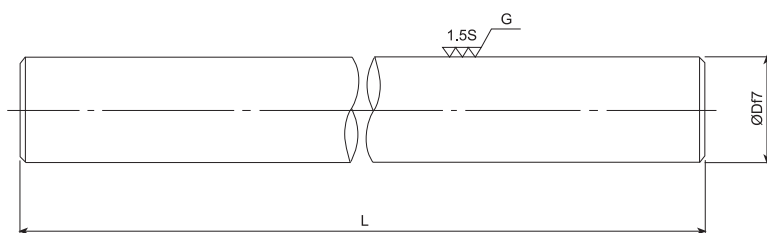
SUSC 不銹鋼軸心(SUS304鍍鉻) Stainless Shaft

材 質：不銹鋼 (SUS 304)

處理方式：表面鍍硬鉻

Material：SUS 304

Treatment: Chromium plated ,grounded,and polished



外徑 Diameter D mm	型號 Model No. SUSC	外徑公差 Diameter tolerance μm f7	最大製作長度 Max. Length L (mm)	重量 Weight kg/m	外徑 Diameter D mm
6	SUSC 6	-13 -28	2500	0.22	6
8	SUSC 8		3000	0.39	8
10	SUSC 10		3000	0.62	10
12	SUSC 12	-16 -34	3000	0.90	12
15	SUSC 15		3000	1.40	15
16	SUSC 16		3000	1.59	16
20	SUSC 20	-20 -41	3000	2.49	20
25	SUSC 25		3000	3.89	25
30	SUSC 30		3000	5.60	30
35	SUSC 35	-25 -50	3000	7.63	35
40	SUSC 40		3000	9.96	40
45	SUSC 45		3000	12.60	45
50	SUSC 50		3000	15.56	50

※ 其他不銹鋼材質或外徑公差亦可供貨，請先與本公司聯絡

SUSCB 外徑攻牙軸心(SUS304鍍鉻,不生鏽)

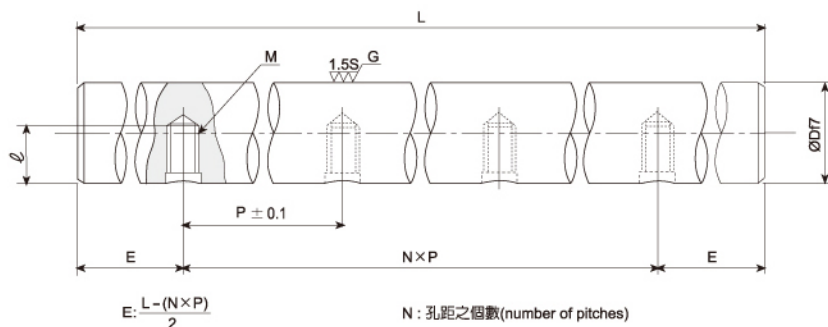
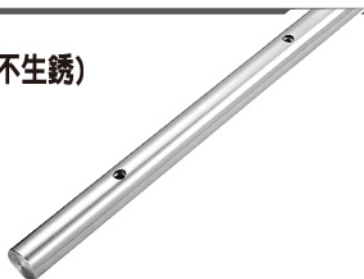
Tapped Shaft (Anticorrosive)

材 質 : 不銹鋼(SUS 304)

處理方式 : 表面鍍硬鉻

Material : SUS 304

Treatment: Chromium plated ,grounded,and polished



單位(unit) : mm

外徑 Diameter	型號 Type	外徑公差 μm Diameter tolerance	孔距 Pitch	螺絲 Nominal screw	螺牙深度 Thread depth	最大長度 Max length	重量 Weight
D	SUSCB	f7	P	M	ℓ	L(max)	kg/m
12	SUSCB12	-16	100	M4x0.7	6	4,000	0.89
16	SUSCB16	-34	150	M5x0.8	8	4,000	1.58
20	SUSCB20	-20 -41	150	M6x1	12	4,200	2.47
25	SUSCB25		200	M6x1	15	4,200	3.85
30	SUSCB30		200	M8x1.25	18	4,200	5.55
35	SUSCB35	-25	200	M8x1.25	20	4,200	7.55
40	SUSCB40	-50	300	M8x1.25	25	4,200	9.87

Example of identification number:

SUSCB 20x1500

① ②

① Type: Shaft diameter

② Overall Length

訂購例 :

SUSCB 20x1500

① ②

① 型號 : 軸心外徑

② 總長度

SUSF 不銹鋼熱處理軸心 (SUS440C) Stainless Steel Shaft

材 質：不銹鋼 (SUS440C)

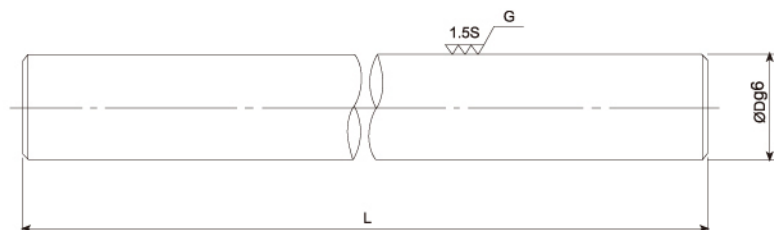
處理方式：高週波熱處理，研磨及表面鍍硬銘

硬 度：HRC 58 以上

Material: SUS440C

Treatment: Heat treatment ground, chromium plated and polished

Hardness: HRC 58 or more



外徑 Diameter D mm	型號 Model No. SUSF	外徑公差 Diameter tolerance μm g6	最大製作長度 Max. Length L (mm)	重量 Weight kg/m	外徑 Diameter D mm
8	SUSF 8	-5	3000	0.39	8
10	SUSF 10	-14	3000	0.62	10
12	SUSF 12		3000	0.90	12
16	SUSF 16	-6	3000	1.59	16
20	SUSF 20	-17	3000	2.49	20
25	SUSF 25	-7	3000	3.89	25
30	SUSF 30	-20	3000	5.60	30
35	SUSF 35		3000	7.63	35
40	SUSF 40	-9	3000	9.96	40
45	SUSF 45	-25	3000	12.60	45
50	SUSF 50		3000	15.56	50

※ 其他不銹鋼材質或外徑公差亦可供貨，請先與本公司聯絡

SUSFB 外徑攻牙軸心 (SUS440C)

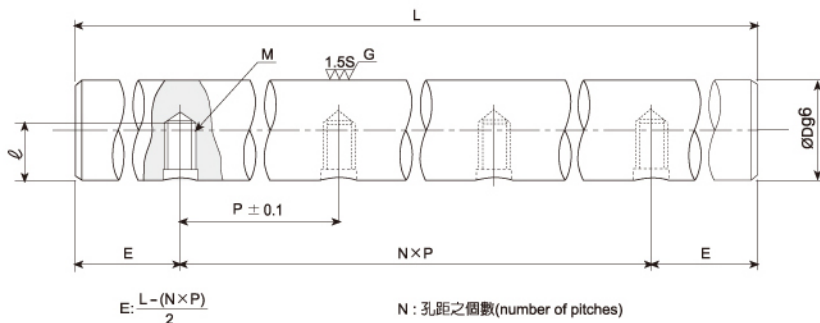
Tapped Shaft (Stainless Steel)

材質：不銹鋼高週波熱處理，
研磨及表面鍍硬銘

Material: Stainless Steel Heat treatment,
ground, chromium plated and polished

硬度：HRC 58以上

Hardness: HRC 58 or more



單位(unit) : mm

外徑 Diameter	型號 Type	外徑公差 μm Diameter tolerance	孔距 Pitch	螺栓 Nominal screw	螺牙深度 Thread depth	最大長度 Max length	重量 Weight
D	SUSFB	g6	P	M	ℓ	L(max)	kg/m
12	SUSFB 12	-6	100	M4x0.7	6	4,000	0.89
16	SUSFB 16	-17	150	M5x0.8	8	4,000	1.58
20	SUSFB 20	-7	150	M6x1	12	4,200	2.47
25	SUSFB 25	-20	200	M6x1	15	4,200	3.85
30	SUSFB 30	-7	200	M8x1.25	18	4,200	5.55
35	SUSFB 35	-9	200	M8x1.25	20	4,200	7.55
40	SUSFB 40	-25	300	M8x1.25	25	4,200	9.87

Example of identification number:

SUSFB20x1500

① ②

① Type: Shaft diameter

② Overall Length

訂購例：

SUSFB20x1500

① ②

① 型號：軸心外徑

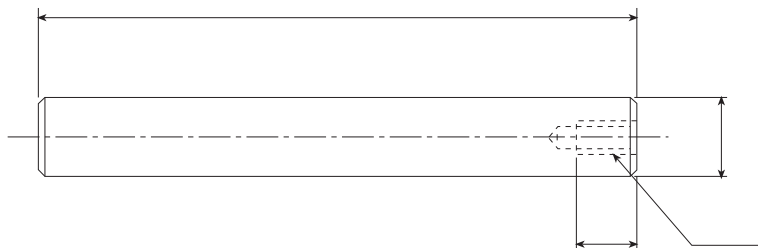
② 總長度

軸心加工圖例

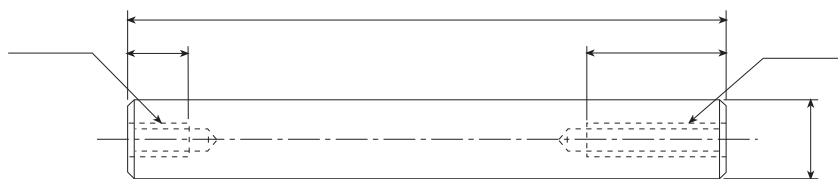
Examples of Shaft Workings

※本公司自備機械加工設備，可代客加工軸心

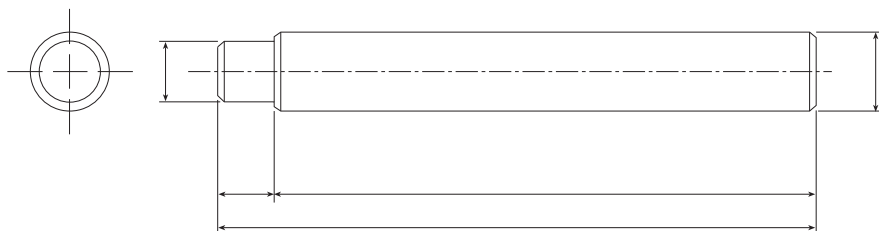
1



2



3

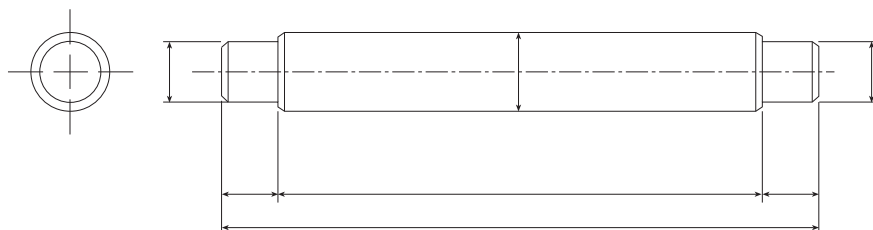


軸心加工圖例

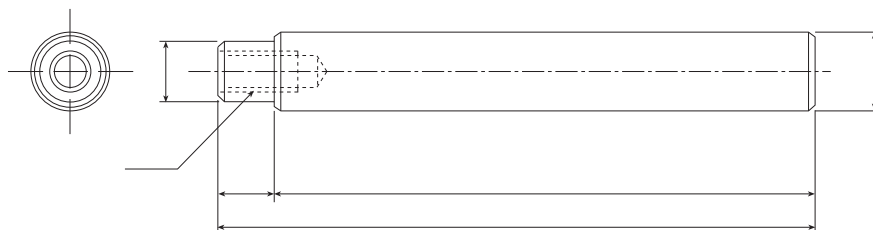
Examples of Shaft Workings

※本公司自備機械加工設備，可代客加工軸心

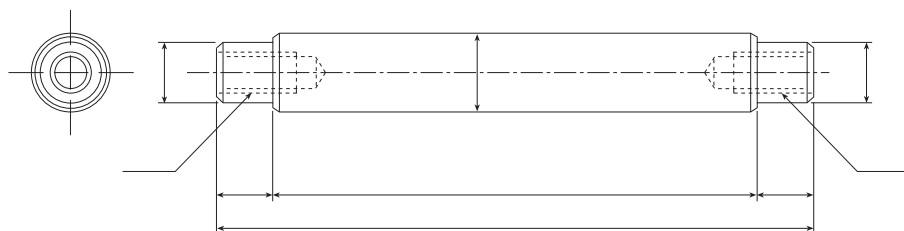
4



5



6

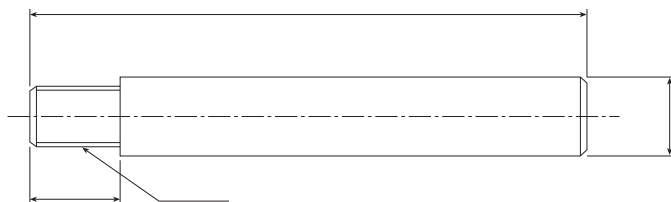


軸心加工圖例

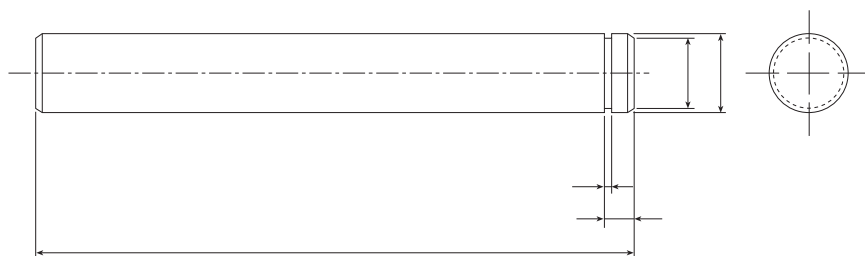
Examples of Shaft Workings

※本公司自備機械加工設備，可代客加工軸心

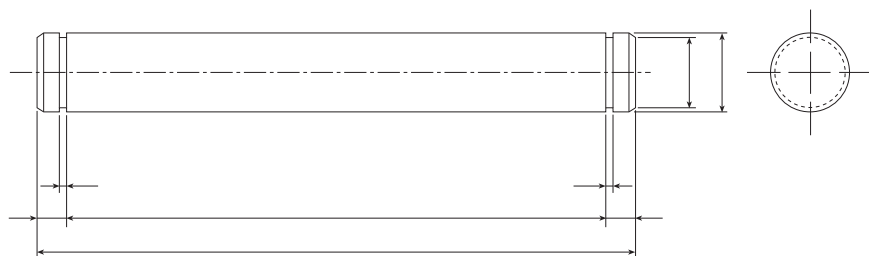
7



8



9

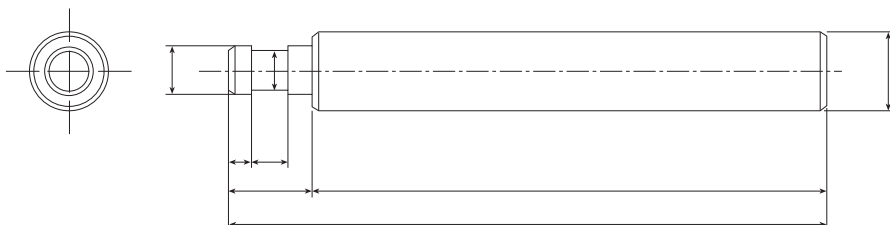


軸心加工圖例

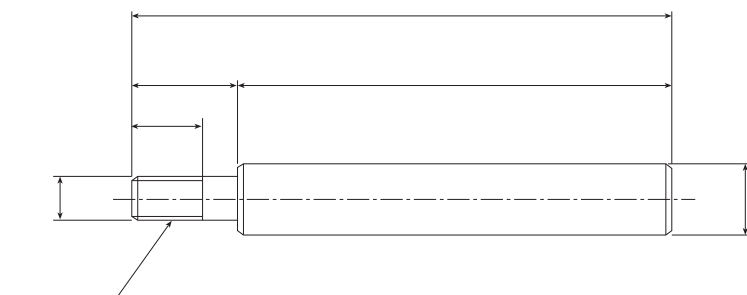
Examples of Shaft Workings

※本公司自備機械加工設備，可代客加工軸心

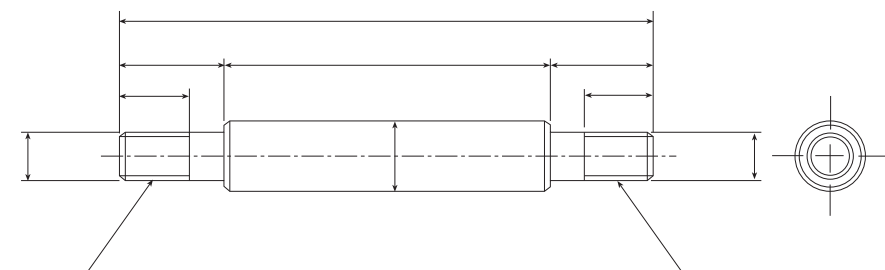
10



11



12

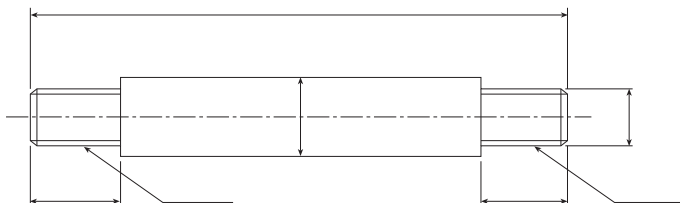


軸心加工圖例

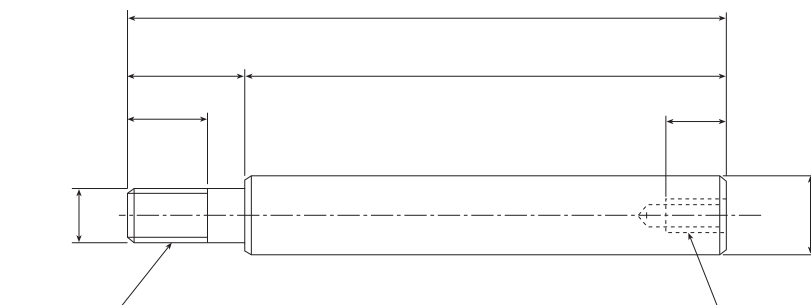
Examples of Shaft Workings

※本公司自備機械加工設備，可代客加工軸心

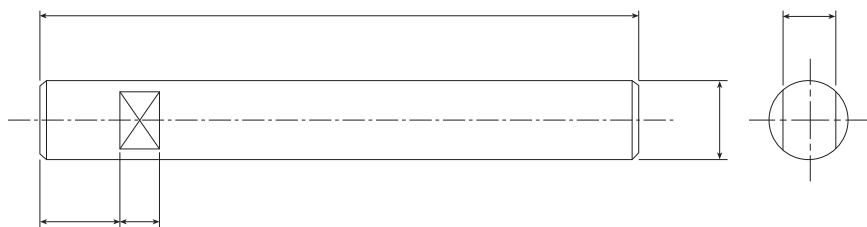
13



14



15

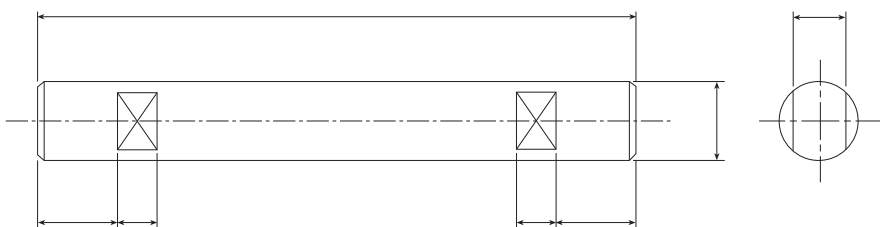


軸心加工圖例

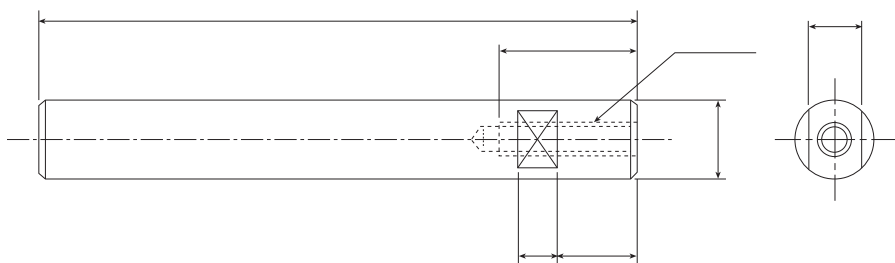
Examples of Shaft Workings

※本公司自備機械加工設備，可代客加工軸心

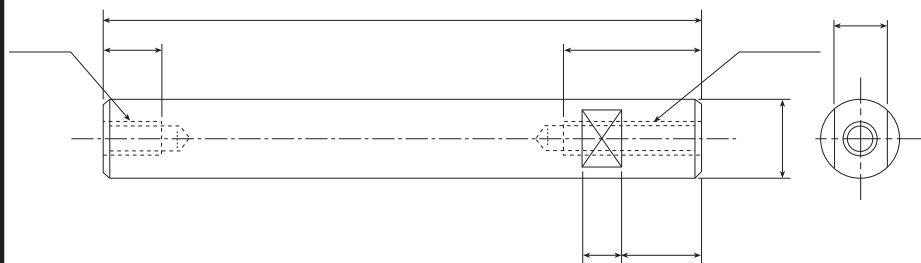
16



17



18

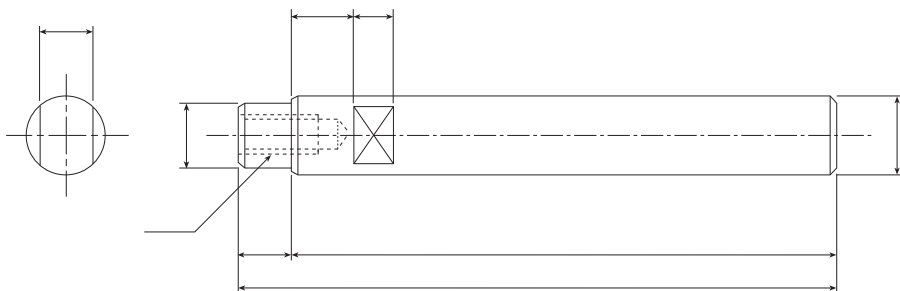


軸心加工圖例

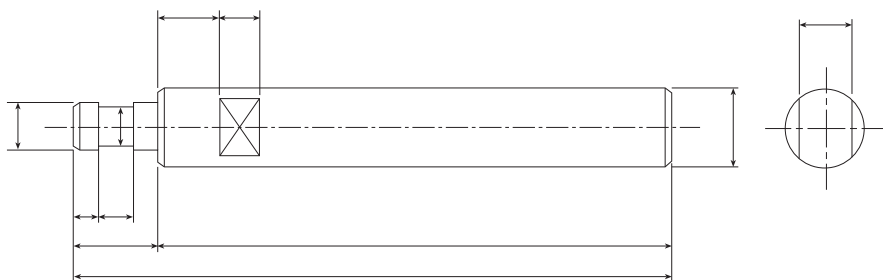
Examples of Shaft Workings

※本公司自備機械加工設備，可代客加工軸心

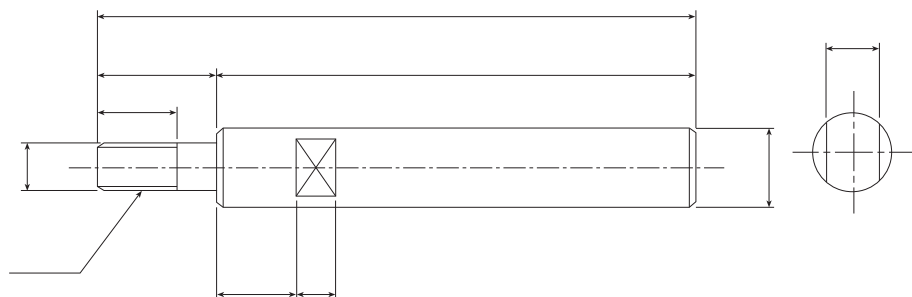
19



20



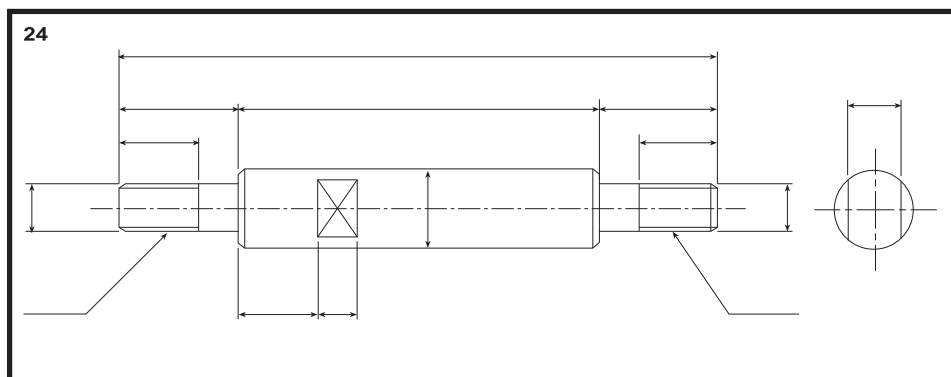
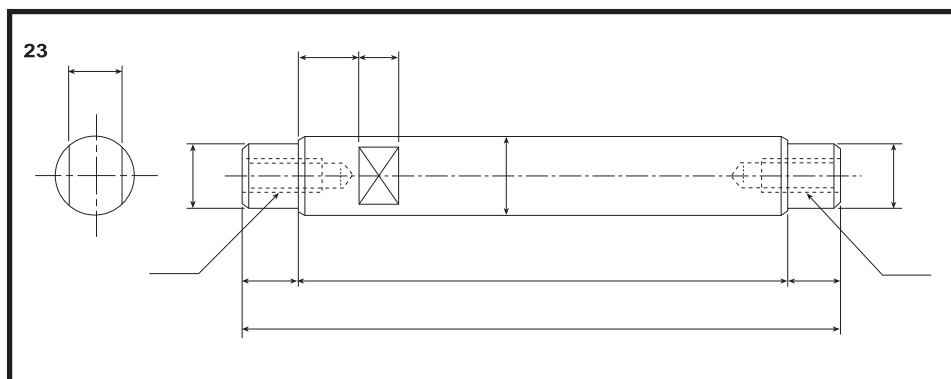
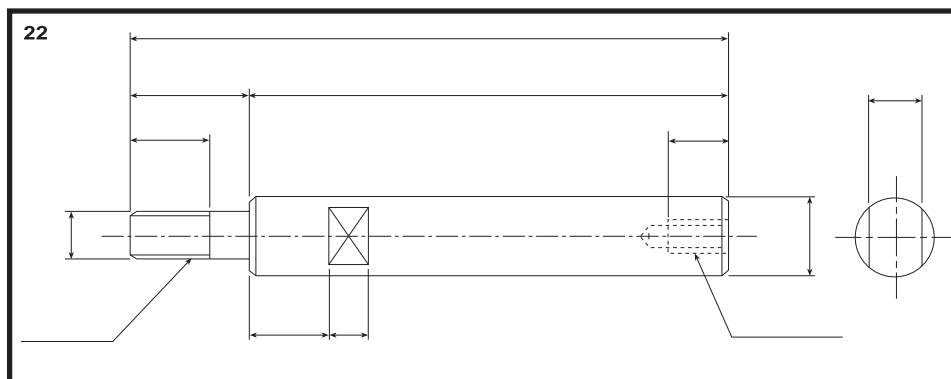
21



軸心加工圖例

Examples of Shaft Workings

※本公司自備機械加工設備，可代客加工軸心



軸心加工圖例

Examples of Shaft Workings

※本公司自備機械加工設備，可代客加工軸心

